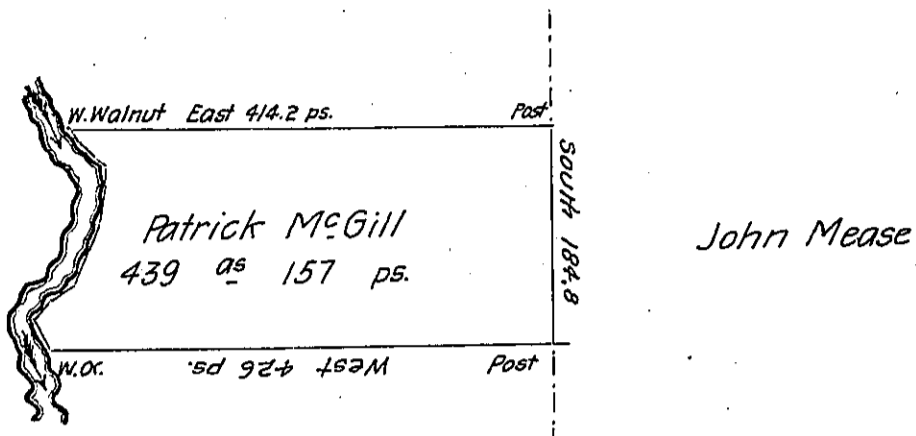


Courses up French Creek beg^d at a W.O.

- N 30° W 17.4
- N 29½° E 18.3
- N 47° E 22.6
- N 30° E 21.2
- N 20° E 30.
- N 6° E 34.5
- N 22¾° W 16.8
- N 47½° W 20.
- N 21° W 20.
- N 8° W 10.

A Small Vacancy



John Fredebaugh

In pursuance of an actual settlement commenced by Patrick McGill in the month of September 1796 was resurveyed for him the 20th day of December 1800 the above described Tract of land containing 439 Acres 157 ps and allowance of six per cent for Roads &c. Situate on the East side of French Creek in Mead Township Crawford County It being the same tract of land that was surveyed for the said Patrick McGill the 28th day of June 1794 in pursuance of his improvement bearing the 25th day of February 1793

William McArthur D. Sr

To Samuel Cochran Esquire
Surveyor General

IN TESTIMONY that the above is a copy of the original remaining on file in the Department of Internal Affairs of Pennsylvania, made conformably to an Act of Assembly approved the 16th day of February, 1833, I have hereunto set my Hand and caused the Seal of said Department to be affixed at Harrisburg, this eighth day of December 1905

Loac R. Brown
Secretary of Internal Affairs.